

PORT WASHINGTON JANUARY 2013 CALENDAR OF EVENTS

**FREE
Take One**

Where to Go and What to Do!

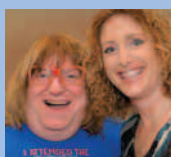
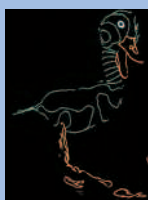
www.PWcalendar.com

JANUARY AT LANDMARK



Jan 5, David Wax Museum, 8 pm
A charismatic, lanky Missourian singing tight harmony with a Southern belle, combining Latin rhythms, infectious melodies, and call-and-response hollering. Hailed by *Time* for its "virtuosic musical skill and virtuous harmonies."

Jan 6 The Ugly Duckling & The Tortoise and The Hare by Corbian/Lightwire Theater 11 am & 2 pm
Two classic tales presented with unique cutting edge technology, moving sculpture, and dance. Dazzling visuals, choreography and music from classical to jazz to pop.



Jan 19 Big & Tall: An Evening of Comedy with Bruce Vilanch & Judy Gold 8 pm
Bruce Vilanch writes hysterical, scripts for Billy Crystal, Steve Martin, as well as television series and variety specials. Judy Gold is an award-winning actress and comedian, best known for her Off-Broadway hit show *25 Questions for a Jewish Mother*.

Jan 26 Kathy Mattea: Calling Me Home, 8 pm
Grammy Award-winning singer-songwriter performing her hits - "Where've You Been?," "455 Rocket" and "Eighteen Wheels and a Dozen Roses" and selections from her new album celebrating the culture of her home state, West Virginia.



Jan 27 Bari Koral - A Family Concert 2 pm
Dubbed the "IT girl" in kids/family music" by *NY Magazine* and the "Sheryl Crow for kids" by the *NY Post*, her catchy, pop, family-friendly tunes, interactive live shows & heavy rotation radio play have gained the band literally thousands of young (and not so young!) fans.



Landmark On Main Street • 232 Main Street
www.landmarkonmainstreet.org • 516-767-6444

Cow Bay Theatre Company Debuts With "Love Letters"

The Cow Bay Theatre Company is proud to announce their inaugural production, A.R. Gurney's *Love Letters*. The first two performances will be at the Jeanne Rimsky Theatre in The Landmark on Main Street on Jan 24 and 25 at 8 pm. The third performance will be a dinner theater production at Ayhan's Marketplace, 293 Main St, on Jan 26 at 6:45 pm (show at 8 pm).

The show is the evocative, touching, and funny story of two people who grew up together and have gone their separate ways, but continue to share confidences in the letters they exchange over a lifetime. Elizabeth Kott will direct the play. Her training includes the National Theatre

Institute of the Eugene O'Neill Theatre Center, and the Royal Shakespeare Company in England.

"We hope to make our first production something special, especially our opening-night," said producer Howard Blankman, founder and immediate past president of the group.

Tickets are on sale exclusively at Ayhan's Mediterranean Marketplace. Jan 24 & 25 tickets are \$10 (cash or check only). In order to achieve a level of intimacy, seats will only be available for the preferred seating section. Dinner theater tickets are \$40 (plus tax & gratuity) and include a four-course dinner. For reservations call Ayhan's Marketplace 767-1400.



PW Play Troupe Children's Show, Auditions for Alice In Wonderland

After an 18-year hiatus, the Port Washington Play Troupe Children's Show will mark its return by holding auditions for *Alice in Wonderland*, Jan. 7-10, 6-9 pm at St. Stephen's Church (9 Carlton Ave.). Performances will be on Mar. 21, 22 and 23, at St. Stephen's Parish Hall.



Photo from the PW Play Troupe's 1973 production of Alice In Wonderland

The show is an inter-generational and there are many roles available for performers in grades four and up. Fourth/fifth graders will audition on the 7th, all other ages will be seen on the 8th. The 9th and 10th will be for callbacks. The Troupe looks for natural expressiveness, imagination and improvisation skills. There are opportunities for those with dance or music experience, design or puppetry. Director Diana VonRoeschlaub, who grew up performing in the Children's Show and Port Summer Show, will direct this stage adaptation by Play Troupe President Pamela Meadows.

For more info contact the Play Troupe at PortWashingtonPlayTroupe@gmail.com or 473-6243.

Sands Point Preserve's Winter Choral Concert Jan. 6



The annual Winter Choral Concert will take place in the Great Hall at Castlegould on Sun., Jan. 6, at 2:30 pm. Four Port Washington-based choruses will participate: The Community Synagogue, United Methodist Church, St. Stephen's Episcopal Church, The Choir of Our Savior's Lutheran Church. Light refreshments will be served.

Admission is \$10 per car or free with Annual Pass. Info: 571-7901, email info@friendsspp.org, www.thesandspointpreserve.com, or stop by the Gate House, open daily at 127 Middle Neck Road, Sands Point.

Bach2Rock To Open January 2



Bach2Rock, a new music school for students of all ages, announces their grand opening at 1015 PW Blvd. (Port Commons Shopping Center). Registration has started for private, group and ensemble music lessons; glee club; and early childhood classes. B2R fosters teamwork, builds self-esteem and motivates students through individual lessons/band instruction, jam sessions, recording sessions in professional recording facilities and public concerts. Birthday and private party packages are also available. Info: 441-5526 or www.b2rmusic.com/portwashington.

LI Alzheimer's Foundation Hosts A Taste Of The Town

The Long Island Alzheimer's Foundation, a local non-profit in Port Washington serving families affected by Alzheimer's and related dementias, is hosting the upcoming food extravaganza "A Taste of the Town," on Jan. 24, 2013, at the LIAF headquarters, 5 Channel Drive, from 4-8 pm!

This food and wine tasting, awareness and fundraising event will feature fine fare from some of

the best restaurants in the town of North Hempstead. Sip and savor a diversity of fine wines, including organic vintages, and sample delectable deserts from local bakeries.

Everyone is invited to attend! \$12 per person (\$20 for two). Sponsorships are also available. For more info call Joyce Schneider at LI Alzheimer's Foundation, 767 6856, www.liaf.org.

Save The Date!

6th Annual Souper Bowl, Feb 2



**SATURDAY
FEBRUARY 2, 2013
12-3 PM**

Fellowship Hall, United Methodist Church
35 Middle Neck Rd.

Good Health is Priceless

Dr. Mary's
CHIROPRACTIC

Specializing in Enzyme Nutrition Therapy



Dr. Mary Gmiterek-Apat

17 ROCKWOOD AVE.
(Across from Daly School)

www.drmarychiropractic.com
516-944-3615

VIDEOS

Of Your
Wedding • Bar/Bat Mitzvah • Anniversary

20% DISCOUNT
WITH THIS AD

CALL
Ron Harris
PRODUCTIONS

Tel: 516-767-9636 • Cell: 516-244-1142
ronharris7@optonline.net
www.ronharrisproductions.com

Marjorie Lieberman
Licensed Salesperson
350 Main Street
Port Washington, NY 11050
C. 516-241-8220
O. 516-883-2900 Ext. 183
marjorielieberman@danielgale.com

danielgale.com

La Parma *****
ITALIAN RESTAURANT
516-439-4960
On the Bay

FOLLOW US ON THE WEB AT www.LaParma.com

TUESDAYS Pasta Night

1/2 OFF Full Size Family Style Pasta

WEDNESDAYS Wine Down

1/2 OFF Any Bottle of Wine Under \$99

THURSDAYS Ladies Night

Happy Hour Drinks Extended
4:00 - 9:00 PM At Bar Only

FRIDAYS Mojito/Sangria Night

\$5 Mojitos or Sangria Till Closing

SATURDAYS \$1 Martinis

1:00 - 4:00 PM With Purchase of Any Full Size Family Style Entree or Pasta

SUNDAYS \$10 Bottomless Mimosas

1:00 - 4:00 PM With Purchase of Any Full Size Family Style Entree or Pasta



HAPPY HOUR 4:00 - 7:00 PM TUESDAY - FRIDAY

Special prices on wine, beer, mixed drinks, martinis/rocks, and appetizers.
415 Main Street on Manhasset Bay, Port Washington NY

RESTAURANT EVENTS & ENTERTAINMENT

MONDAYS

LOUIE'S 395 Main St 883-4242
Frank Sinatra Tribute Band 6 -10 pm

TUESDAYS

LENNON'S PUB 105 Main St. 883-4350
Pub Quiz Nite- 8:30pm

THURSDAYS

FINN MACCOOL'S 205 Main St. 944-3439
Open Mic/Karaoke 9 pm

SULLIVAN'S QUAY 541 PW Blvd. 883-3122
Karaoke Every Thursday 10 pm

FRIDAYS

BRIO RISTORANTE & MICHAEL'S WINE BAR
45 Old Shore Rd. 767-0077
Guitar Playing 7 - 10 pm

DOLPHIN BOOKSHOP CAFE

299 Main Street, 767-2650
All types of music. Free. 7 pm

SATURDAYS

AYHAN'S MARKETPLACE & CAFE
293 Main St 767-1400
Jan 26 Dinner Theater - Love Letters
6:45pm See page 1 or ad on this page for more info

FINN MACCOOL'S 205 Main St. 944-3439
George on Sax

SUNDAY

FINN MACCOOL'S 205 Main St. 944-3439
Harpist 12 - 3 pm

Piper's
MacMind
<http://macmindonline.com>

Support & Service for Apple Products

516-439-5330

<http://macmindonline.com>

Certified Trainer Consultants Network

Dinner Theater with Port Washington's Newest Community Theater Organization

Cow Bay Theatre Company's
Premier Production

Love Letters

BY PULITZER PRIZE-WINNING PLAYWRIGHT

A.R. Gurney

SATURDAY JANUARY 26

DINNER 6:45 PM • CURTAIN 8 PM

Enjoy a Four-Course Dinner and Live Theater Without Leaving Your Seat!

Dinner & Play \$40
Plus tax & gratuity

Seating limited to 60 people • Free parking
Call for reservations: 516-767-1400

"Exhilarating, funny and moving."
- The Wall Street Journal

"A Valentine... a love letter for the ages."
- Christopher Silk, Daily News Group, Naples FL



293 Main Street, Port Washington
516-767-1400 • Fax 516-767-1484 • www.ayhansrestaurants.com

Finn MacCool's

CURES FOR THE WINTER BLAHS

- | | |
|---------------------|---|
| MONDAY | Wine Down with 1/2 Price Bottles of Wine |
| TUESDAY | Complimentary Glass Of Wine with dinner |
| WEDNESDAY | Italian Pasta Night |
| THURSDAY | Irish Night - Corned Beef & Cabbage |
| FRIDAY | Seafood Night |
| SATURDAY | Prime Rib Special |
| SUNDAY | Brunch with Complimentary Mimosa or Bloody Mary |
| SENIOR LUNCH | Mon.- Fri. • 12 - 3pm • \$12 |

ENTERTAINMENT

FOOTBALL PLAYOFFS!!

- | | |
|-----------------|--------------------------|
| THURSDAY | Open Mic - Karaoke • 9pm |
| FRIDAY | Daniel on the Guitar |
| SATURDAY | George on the Sax |
| SUNDAY | Harpist • 12 - 3pm |

205 Main Street, Port*Washington, NY
516-944-3439
Private Party Room Available



FINN MACCOOL'S

OPEN 7 DAYS
 Mon-Sat 9:30-7:00
 Sunday 10:00-6:00

Best in Town
 Luxurious
 Relax
 Hygienic
 Organic spa

La La Nail & Spa

GIFT CERTIFICATES AVAILABLE

www.lalanailspa.com
 Tel. 516.883.1136
 134 Shore Road • Port Washington

Over 50 Classes A Week!

om sweet om
 YOGA



\$40
 FOR NEW STUDENTS
 1 MONTH UNLIMITED YOGA

516-944-YOGA
 12 Irma Ave., Port Washington, NY
 gail@omsweetomyoga.com
 www.omsweetomyoga.com

Chinese Tui-Na Center

\$30 One Hour Foot Reflexology
\$50 One Hour Bodywork

Open 7 Days a Week • 10:00AM - 9:00PM
 516-732-3766
 95 Main Street • Port Washington

SUNDAY	MONDAY	TUESDAY	WEDNESDAY	THURSDAY	FRIDAY	SATURDAY
JANUARY 2013						
		1 <i>A Happy & Healthy New Year To All!</i> New Years Day	2 Film: <i>West Point</i> PW Library 7:30 pm (Page 6)	3 Fruitcake Toss Day	4 Last Quarter Art Sandwiched In: George Bellows PW Library 12:10 pm (Page 6) Family Film: <i>Brave</i> PW Library Early Start Time 7 pm (Page 6)	5 Artist Reception: Lisle S. Orjuela PW Library 2 pm (Page 6) David Wax Museum Landmark 8 pm (Page 1)
6 The Ugly Duckling & The Tortoise and the Hare Landmark 2 pm (Page 1) Winter Choral Concert Sands Point Preserve 2:30 pm (Page 1)	7 Book Discussion: <i>The Land Of Green Plums</i> PW Library 7:30 pm (Page 6) Film: <i>The Amazing Spiderman</i> PW Library 7:30 pm (Page 6) Auditions: <i>Alice In Wonderland</i> St. Stephen's Church 6-9 pm (See page 1 for more audition dates & details)	8 Chamber of Commerce Ayhan's Fish Kebab 8 am (Page 5) Chess Players PW Library 2 - 4 pm (Page 6)	9 Knights Of Columbus Annual Free-Throw Contest Daly School Gym 7:30 pm (Page 5) Photography Club of LI PW Library 7:30 pm (Page 6)	10 Film & Discussion: <i>Seeking A Friend For The End Of The World</i> PW Library 7:30 pm (Page 6)	11 New Moon Live @PWPL: Bon Journey PW Library 7:30 pm (Page 6)	12 Next Chapter: A Discussion Of Current Events PW Library 10 am - noon Info: 883-4400
13 Family Event: Geocaching Sands Point Preserve 9 am - 3 pm (Page 5) Laura Hull Trio PW Library 3 pm (Page 6) Jill Emery Boxing Demo Intensity Fighting Arts 1-3 pm (Page 6) International Sceptics Day	14 Afternoon at the Opera: Dueling Composers PW Library 2 pm (Page 6) Reception for Photographer Jane Protzman PW Library 7 pm Info: 883-4400	15	16 Film: <i>The Tango Lesson</i> PW Library 7:30 pm (Page 6)	17 Art Lecture: History of The World In 100 Objects, Part 4 PW Library 7:30 pm Info: 883-4400	18 First Quarter Scrabble Players PW Library 2-5 pm (Page 6) Film: <i>Savages</i> PW Library 7:30 pm (Page 6) Winnie The Pooh Day	19 Comedy with Bruce Vilanch & Judy Gold Landmark 8 pm (Page 1) National Popcorn Day
20 Harpist Elizabeth Hainen PW Library 3 pm (Page 6)	21 Book Discussion: <i>The Land Of Green Plums</i> Part 2 PW Library 7:30 pm (Page 6)  Martin Luther King Day	22	23 Film: <i>Wishful Thinking</i> PW Library 7:30 pm (Page 6) PW Calendar FEBRUARY Issue Closing Call 883-0313 for details National Pie Day	24 A Taste Of The Town LI Alzheimer's Foundation 4-8 pm (Page 1) Love Letters Landmark 8 pm (Page 1)	25 First Quarter Films: <i>Do-Deca-Pentathlon</i> PW Library 7:30 pm (Page 6) Love Letters Landmark 8 pm (Page 1)	26 Full Moon Kathy Mattea Landmark 8 pm (Page 1) Stirling Jazz Castle Gould, Sands Point 7 pm (Page 5) Dinner Theater: Love Letters Ayhan's Marketplace 6:45 pm (Page 1)
27 Bari Koral Landmark 2 pm (Page 1)	28 Film: <i>Free Men (Les Hommes Libres)</i> PW Library 7:30 pm (Page 6)	29 National Kazoo Day	30 Film: <i>Chasing Sleep</i> PW Library 7:30 pm (Page 6)	31 Inspire Your Heart With Art Day	 <p>The staff of Port Washington Calendar has made every effort to provide current, accurate information in this issue. We encourage our readers to call the sponsors to confirm schedules and events. Let Us Know of Your Organization's Events We publish what we feel will be of interest to our readers. Call Marie at 883-0313 or email your information to editorial@pwcalendar.com.</p>	

LAFHEY FINE HOMES
 LAFHEY.COM
Happy Healthy 2013!

 Edith E. Katz
 CBR, SRES, CLHMS
 Licensed Associate RE Broker
 LUXURY PORT/OLIO
 215 Main Street, Port Washington, NY
 516.883.7780 Ext. 278
 516.639.1172 cell
 www.EdieSellsLongIsland.com

LANDMARK
 215 MAIN STREET

David Wax Museum1.05.13
 "The Ugly Duckling and The Tortoise and The Hare"1.06.13
 BIG AND TALL:
 Comedy with Bruce Vilanch & Judy Gold ...1.19.13
 Grammy Award winner Kathy Mattea1.26.13
 Bari Koral Family Rock Band1.27.13
Box Office: (516) 767-6444
 www.landmarkonmainstreet.org

My Little World Daycare, Inc.
 "Where learning is fun!"
 Arts & Crafts • Math & Reading
 Music & Dance • Bi-lingual
 Breakfast, Snack & Lunch Available
 Ages Six Weeks to 12 Years Old
 LOCATED AT
 1165 Port Washington Blvd.
 Port Washington, NY
 Contact Myriam Signorini
 516-883-1723 • 917-406-8141
 Licensed by New York State LID#2350086FDC
 www.mylittleworlddaycareinc.com

ZIMBARDI FINANCIAL GROUP
 Salvatore R. Zimbardi, CFP
 Daryl J. Zimbardi, RR
 A Full Service
 Financial Planning Firm
 Estate & Tax Planning • Retirement Planning
 T. 516-767-2600 • F. 516-883-4725
 223 Main St. • Port Washington, NY
 Securities offered through ING Financial
 Partners - Member FINRA & SIPC

Start the New Year Right! With Your Own Local Ad In The

PORT WASHINGTON CALENDAR
 www.pwcalendar.com

In Print and On the Web - Less Than 2¢ per copy
FEBRUARY ISSUE
 Advertising and Editorial Closing: January 23
 Call 883-0313 • Email: CustomerService@PWcalendar.com

DUTCH CONNECTION INC.
 Maximize Your Business Productivity

Bookkeeping Services
 Business Consulting Services

Please contact
 Erica at 516-944-2260
 Dutchconnection4@aol.com

OWN A BUSINESS?
 IS THE PAPERWORK GETTING YOU DOWN?
 HAVE A GREAT IDEA & WANT TO START A BUSINESS?
 NOT SURE HOW TO GO ABOUT IT?
WE CAN HELP!!

Intensity Fighting ARTS

GET IN THE BEST SHAPE OF YOUR LIFE!
 CALL NOW!
 For Your FREE Intro Class
 Muay Thai • Brazilian Jiu-Jitsu
516-453-5170

For more information, please call/text
 516-453-5170 or email train@intensityfighting.com
 Visit our website at www.intensityfighting.com

79 Main Street, Port Washington
 (LOCATED ACROSS FROM THE PORT WASHINGTON LIRR STATION)
 CLASSES: Monday-Friday • 7:30-8:30 PM
Get Started Today & Train with INTENSITY!

188 Main Street 516-883-6488
MAIN STREET
 ~ Wine & Spirits ~
EVERYDAY Wine Discount Policy
 20% off any case - same bottle
 Mix or Match
 12 or More Bottles | 6 or More Bottles
15% OFF | 10% OFF
 Excludes sale & allocated wines
 Credit cards accepted... No limits
 We make it easy for you to SAVE
 www.mainlywines.com
 Now Taking Orders For Holiday Baskets

IS YOUR C.P.A. M.I.A.?

Sheehan & Company

15 S. Bayles Avenue, Port Washington, NY
 516.883.5510 • www.sheehancpa.com

CIVIC & NOT-FOR-PROFIT

AMERICAN LEGION POST 509 NOTICE: FLAG RETIREMENT - LOCATION FOR FLAG DISPOSAL 39 Haven Avenue. Container on the front porch. During daylight hours only please. To join Post 509 call Commander Arthur George: 516-708-5819

ANCIENT ORDER OF HIBERNIANS 2nd Wed: 8 pm. St. Peter of Alcantara, 1327 PW Blvd.

FRIENDS OF THE SANDS POINT PRESERVE Jan 6 Winter Choral Concert 2:30 pm Four PW-based choruses: The Community Synagogue, United Methodist Church, St. Stephen's Episcopal Church, The Choir of Our Savior's Lutheran Church. Light refreshments. \$10 per car or free with Annual Pass.; **Jan 13 Geocaching - A Treasure Hunt** Start anytime from 9 am - 3 pm. A treasure hunt, using a hand held GPS unit or a smartphone with a geocache app will guide you to the "caches" or treasures. Paul Dejana Learning Center. Adults and families welcome. \$10 per car or free with Annual Pass.; **Jan 26 Sizzling Jazz 7 pm.** In the Great Hall at Castlegood, composer/music director Steven Lutvak, and cast members are back by popular demand. Two levels of tickets - Supper Club: \$100pp or Concert & Cocktails: \$75pp. Discounts are available for series tickets and groups of six or more. **Feb 2 Groundhog Day 12 - 2 pm** Crafts and activities for the family and our own Long Island groundhog. \$10 per car or free with Annual Pass. 127 Middle Neck Rd. 571-7901 www.thesandspointpreserve.com

GREATER PORT WASHINGTON BID Jan 2, Board of Directors Meeting 7 pm Chamber/BID Office, 329 Main Street (Sunset Park).

KNIGHTS OF COLUMBUS Jan 9 Shoot Out-Annual Free Throw Contest, 7:30 pm, Daly Gym. Boys and girls age 10-14 are eligible. Trophies for winners and runner-ups in five brackets. Winners advance to district level. Registration at gym entrance. Info: Tom Piccininni 883-0769. **Meet 2nd & 4th Tuesdays, 8 pm,** 155 Manorhaven Blvd 767-0040, www.kofc1227.com, email at info@kofc1227.com.

KIWANIS CLUB OF MANHASSET - PORT WASHINGTON 2nd & 4th Thurs: Lunch at Port Washington Yacht Club, 1 Yacht Club Dr. 12:30pm

POLISH AMERICAN HALL 5 Pulaski Pl. 883-5553 portwashingtonpolishclub.com

POLISH AMERICAN MUSEUM 16 Bellevue Ave. Museum is open Sun. by appointment. 883-6542.

PW CHAMBER OF COMMERCE Meets second Tues, 8 am, Fish Kebab 286 Main St. 883-6566

PW SENIOR CITIZENS CENTER 80 Manorhaven Blvd. 883-6656 **Mon-Fri, 9am-3pm.** Lunch: noon \$3. Free transportation. **Mon** Chair Yoga 11-Noon; Knitting/Crochet Circle 10-11am; Alternating Line Dancing or Karate 1-2pm **Tues** Painting 9:30-11:30; Sewing & Quilting 9:30-1:30; Wii bowling 10-11am; BINGO 12:30-1:30pm **Wed** Bridge 9 - Noon; Escalate Your Art (art class) 9:30-Noon; Tai Chi 1-2pm **Thurs** Gentle Yoga 10:30- 11:30am; BINGO 12:30-1:30pm **Fri:** Movie 9:30 - 11:30am; Core Strength Exercise 11-Noon. Exercise opps are free. Other activities, free w/weekly membership of \$20

PW SENIOR COMMUNITY SERVICE CENTER St. Stephen's Church 9 Carlton Ave. 944-9654. Mon-Fri 9-4pm. Transportation available. Lunch at noon daily. Call for reservations. **Mon, Wed-Fri** 10:30am Exercise instructors **Mon:** Stained glass, painting & decoupage 10am, **Exercise w/Suzanne** 10:30am; **Tues:** Digital Photography 10am; **Wed:** Yoga w/Pattie 10:30am **Thurs:** Tai Chi w/Rosalie 10:30am, Art w/Ed 10am **Bring a sketch pad & pencils** **Fri:** Light workout w/Pattie.

PORT WASHINGTON YOUTH ACTIVITIES (PYA), Sports programs for boys and girls in grades K - 7 year-round - including baseball, softball, basketball, lacrosse, football, wrestling, field hockey, and more. PW's largest not-for-profit youth sports organization with beautiful playing fields at the end of Glen Ln off Sandy Hollow Rd. www.pyasports.org or 944-7921.

THOMAS DODGE HOUSE Tours 4th Sun. of month 1-5 pm. Oldest house in PW (1721). \$4 admission fee. 58 Harbor Road, 365-9074.

TWIN PINES FOOD CO-OP/ THRIFT SHOP 382 Main St, Tues-Sat 10am-5pm. Health food & groceries. Thrift Shop w/ clothing, bric-a-brac, toys, furniture & more. Parking at Town Dock. 883-9777

VETERANS OF FOREIGN WARS OF THE US Henderson-Marino Post #1819. **2nd Mon. of every month, 8pm.** 29 Mohegan Ave., Manhasset Isle. 767-1552

Please let us know about your organization's event! Call 516-883-0313 or email marie@pwcalendar.com

PORT WASHINGTON SCHOOLS SCHEDULE - JANUARY

3 THURS AGATE Mtg 7:30 pm Weber Lib
4 FRI & 5 SAT Schreiber Drama Club Young Playwrights Festival 7:30 pm
6 SUN Schreiber Drama Club Young Playwrights Festival 2:30 pm
8 TUES BoE Mtg 8 pm Schreiber Aud
9 WED Weber HSA Meeting 9 am Weber Lib
10 THUR Safety & Substance Abuse Task Force Mtg 12:15 pm Daly Annex
AAPW Mtg 7:30 pm Schreiber Faculty Caf
11 FRI Salem HSA Meeting 9:30 am APR
SEPTA Second Cup 9:30 am Sweet Comfort Bakery
Guggenheim HSA Mtg 10 am Cafe
Daly Talent Show 7 pm Guggenheim Caf
15 TUES Salem Winter Concert 7:30 pm
16 WED Weber Blood Drive 2-8 pm Weber APP
Weber 6th Grade Art Reception 7 pm
Manorhaven Dessert w/the Principal 7:30 pm Lib
17 THURS Manorhaven Community Read Aloud
Daly Winter Concert 9:30 am Gym
18 FRI - 28 MON Weber Book Fair
Sousa HSA Mtg 8:15 am Caf
Guggenheim Winter Concert 9:30 am Caf

21 MON School Closed **Martin Luther King Day**
22 TUES BoE Meeting 8 pm Schreiber Aud
23 WED Weber 8th Grade Accelerated Art Exhibit 7 pm Front Lobby
Schreiber HSA Mtg 7:30 pm Commons
25 FRI Girls Basketball PYA Night 7 pm Schreiber Gym
30 WED Salem Book Exchange 10 am Stage
Schreiber Annual Art Show 6:30 pm Atrium
Salem Conversations w/ Principal 7 pm Conf Rm
31 THURS Daly HSA Meeting 9:30 am APR

PORT WASHINGTON SCHOOL DISTRICT

Administration Office 767-5000
www.portnet.k12.ny.us

Daly Elementary 767-5200
 Guggenheim Elementary 767-5250
 Manorhaven Elementary 767-5300
 Sousa Elementary 767-5350
 South Salem Elementary 767-5400
 Weber Middle School 767-5500
 Schreiber High School 767-5800

JANUARY VARSITY SPORTS - HOME GAMES

1/3	5 pm	G Gymnastics*	North Shore HS	1/15	5 pm	G Gymnastics*	Garden City HS
1/8	5 pm	G Gymnastics*	Roslyn Hts HS	1/16	5 pm	B Wrestling	VS Central HS
1/8	6:30 pm	B Basketball	Hicksville HS	1/18	7 pm	B Basketball	Baldwin HS
1/11	6:30 pm	B Basketball	VS Central HS	1/25	9 am	B Wrestling	Invitational Meet
1/11	6:30 pm	B Track/Field		1/29	7 pm	B Swimming**	Sewanakah HS
1/11	7 pm	B Swimming**	Massapequa HS	*Gymnastics meets held at Sousa Elementary			
1/12	9 am	B Wrestling	Invitational Meet	**Swim meets held at Great Neck Middle School			

PW School District Registration for Fall 2013

Kindergarten registration for September 2013 will take place at Central Registration, 90 Avenue C, PW. Please call 767-5470, 8:30 am - 3 pm to schedule your appointment. Refer to the list to determine when to register Download the Registration packet

at: www.portnet.k12.ny.us.
 Sousa: 1/7 - 1/11; Manorhaven: 1/15 - 1/18; Guggenheim: 1/22 - 1/25; Daly: 1/28 - 1/31; Salem: 2/4 - 2/7. In the event of a winter storm you will be contacted to reschedule in February.

LONG ISLAND'S NEWEST MUSIC SCHOOL

GRAND OPENING JANUARY 2, 2013



B2R
BACH TO ROCK
AMERICA'S MUSIC SCHOOL

- ★ Group & Private Lessons
- ★ NYSSMA Preparation
- ★ Rock City & Kids N Keys Early Ed Classes
- ★ Birthday Parties
- ★ Karaoke
- ★ Rehearsal & Recording Studio
- ★ Evening Open Jam Sessions

Call us at 516-441-2256

or come in for a tour of our brand new 3500 sq. ft. facility
 Visit our web site www.b2rmusic.com/portwashington

1015 Port Washington Blvd., Port Washington, NY

WBC Champion Jill Emery at Intensity Fighting Arts

On Jan. 13, from 1 - 3 pm, Intensity Fighting Arts, 79 Main St. (entrance on Irma Ave), will host a free seminar teaching the basics of boxing with Jill Emery.

Ms. Emery is an internationally decorated, four-time Golden Gloves winner and former women's WBA, WBO, and

WBC Welterweight Champion.

Men and women, of all fitness and experience levels are welcome. No gear needed. Wear comfortable shorts and top.

For more info call 453-5170, go to www.intensityfighting.com or email train@intensityfighting.com.

JANUARY AT THE LIBRARY • 516-883-4400 www.pwpl.org

EXHIBITS

MAIN GALLERY: Lisie S. Orjuela: Groundings, Jan. 3 - 30. Reception for the artist on Sat., Jan. 5, 2 - 4 pm

MARTIN VOGEL PHOTOGRAPHY GALLERY: JANE PROTZMAN: Water, Water Everywhere, Jan. 4-Feb. 28. Meet the artist Jan. 14, 7 pm, with a talk at 7:30pm.

EVENTS

2 WEDNESDAY FILM: *West Point* (1927-95 min.) 7:30pm

4 FRIDAY ART SANDWICHED IN: George Bellows. 12:10 p.m.

SCRABBLE PLAYERS! Join us for a game! 2 - 5 p.m.

SACRED CITIES: Mexico City: The Promised City of Huitzilopochtli. 3 p.m.

FAMILY FILM: *Brave* (2012-93 min.-PG). Note the early start time: 7 p.m.

5 SATURDAY Lisie S. Orjuela: The Art Advisory Council hosts a reception for the artist. 2 - 4 p.m.

6 SUNDAY BARRYMORE FILM FESTIVAL: Richard Boleslowsky's *Rasputin and the Empress* (1932-121 min.). Also, *State's Attorney* (1932-79 min.). 1:30 p.m.

7 MONDAY GREAT BOOKS: A discussion of *The Land of Green Plums* by Herta Müller. 1 p.m.

THE AMAZING SPIDERMAN (2012-136 min.). 7:30 p.m.

8 TUESDAY CHESS: All are welcome. Bring a game if you have one. Tuesdays from 2 to 4 p.m.

9 WEDNESDAY PCL: The Photography Club of Long Island hosts its monthly meeting. 7:30 p.m.

BOOK DISCUSSION: *Homer and Langley* by E. L. Doctorow. 7:30 p.m.

10 THURSDAY DIRECTOR'S CUT: Film expert John Bosco will screen and discuss *Seeking a Friend for the End of the World* (2012-101 min.). 7:30 p.m.

11 FRIDAY LECTURE SANDWICHED IN: Will the Real Cleopatra Please Stand Up? 12:10 p.m.

LIVE@PWPL: Bon Journey the Band. Bon Jovi and Journey tribute w/classic hits from both groups. 7:30pm

12 SATURDAY NEXT CHAPTER: A discussion of current events. Bring your opinions! 10 a.m. - noon.

13 SUNDAY LAURA HULL TRIO: Ella and Ellington. 3pm

14 MONDAY VIRTUAL VISITS: The Havemeyer Collection. 11 a.m.

AFTERNOON AT THE OPERA: Dueling Composers: Richard Wagner, Giacomo Meyerbeer and Anti-Semitism. 3 p.m.

PHOTOGRAPHER JANE PROTZMAN: Reception at 7 p.m.; talk by the photographer at 7:30 p.m.

16 WEDNESDAY LIBRARY BOARD OF TRUSTEES: 7:30 pm.

THE TANGO LESSON (1997-101 min.). 7:30 p.m.

17 THURSDAY ART LECTURE: A History of the World in 100 Objects. Part Four. Empire Builders (300 BC - 1 AD) and Ancient Pleasures, Modern Spice (1 AD - 600 AD). 3 p.m.

BOOK DISCUSSION: *One Hundred Names for Love* by Diane Ackerman. 1:30 p.m.

18 FRIDAY SANDWICHED IN: Clear and Present Danger: Free Speech and the Constitution: A Conversation with James L. Coll. 12:10 p.m.

SCRABBLE PLAYERS! Join us for a game! 2 - 5 p.m.

FILM *Savages* (2012-144 min.). 7:30 p.m.

20 SUNDAY Harpist Elizabeth Hainen performs selections from Donizetti, Debussy, Bach and others. 3 p.m.

21 MONDAY GREAT BOOKS DISCUSSION GROUP: Continued discussion of *The Land of Green Plums* by Herta Müller. 1 p.m.

23 WEDNESDAY BARRYMORE FILM FESTIVAL: *Wishful Thinking* (1997-90 min.). 7:30 p.m.

25 FRIDAY SANDWICHED IN: Reducing Your Real Estate Tax Assessment. 12:10 p.m.

FILM: *The Do-Deca-Pentathlon* (2012-76 min.). 7:30pm

28 MONDAY FREE MEN (*Les Hommes Libres*) (2011-99 min.). 7:30 p.m.

30 WEDNESDAY CHASING SLEEP (2000-104 min.). 7:30 p.m.

PORT WRITES: The group discusses their work and how to get it published. Facilitated by Michael Chaplan. 8 p.m.

RELIGIOUS SERVICES/ACTIVITIES

ARCHANGEL MICHAEL GREEK ORTHODOX CHURCH 100 Fairway Dr., 944-3180, archangelmichaelchurch.com

Sun 9:30 am (Ortho 8:30 am), Sunday School 9:30 am (Sept- June), Fellowship: 11:30 am

CHABAD OF PORT WASHINGTON 80 Shore Rd, 767-TORAH www.chabadpw.org

Daily (M-F) 7am, **Sun** 9am, **Fri** 6:30pm

Saturday Torah Study 8:45am, Service 9:30am (Children's Service 10:30am)

CHEVRAT TEFILLAH 1 Sintsink Dr. West, 767-1844 **Shabbat** Service 8:30 am. Kiddush after

COMMUNITY SYNAGOGUE 160 Middle Neck Rd, 883-3144 Ext. 322 www.commsyn.org

Non-members are welcome. Any donation to the Community Synagogue is greatly appreciated.

FIRST CHURCH OF CHRIST SCIENTIST

402 Main St, 767-0484 **Sun** 11am, **Wed** 7pm. Reading Room open Tues-Thurs, noon-3pm

LUTHERAN CHURCH OF OUR SAVIOR

12 Franklin Ave, 767-0603 Services: **Sunday** **Worship** 10am; **Tuesday** Kids Klub 4-5:30pm lutheranchurchportwashington.com

MT. OLIVE A.M.E. CHURCH 20 Mackey Ave, 883-3530 **Sun** Church School (all ages) 9:30 am. Morning Prayer 10am, Worship Services 11 am www.mtolivepw.org

OUR LADY OF FATIMA 6 Cottonwood Rd, 767-0781 **Mon-Fri** Mass 8 am **Sat** Mass 5 pm & 7 pm (Spanish) **Sun** Mass 8 am, 10 am (Family), 11:30 am **Holy Days** - Mass 8am & 7:30 pm. ourladyoffatimapw.org

PORT JEWISH CENTER 20 Manorhaven Blvd. 944-7202 portjewishcenter.org **Fri** Shabbat Service (3x month) 8 pm, **Third Friday** 7:30 pm. **First Friday** Tot Shabbat 6:30pm

SAINT PETER OF ALCANTARA 1327 PW Blvd, 883-6675 **Mon-Sat** Mass 8:30am **Sat** Church 5pm **Sun** Church 7:30am, 10:30 am & noon, Family Mass 9 am, School Church 9:30am (Spanish Mass) stpeterofalcantara.org

ST. STEPHEN'S CHURCH Main Street, 767-0363 www.ststephenspw.org **Sun** - Holy Eucharist 8am Family Worship 10am, Sunday School 10am, Nursery Care 10am

TEMPLE BETH ISRAEL Temple Dr, 767-1708 tbiport.org **Fri** 6:45pm, **Sat** 9:30am, **Sun** 9am

THE BIBLE CHURCH 35 Campus Dr, 944-8150 **Sun:** Sunday School (all ages) 9:45am; Sunday Morning Worship 11am; Bible Study 6:30 pm www.thebiblechurch.us

UNITED METHODIST CHURCH OF PW 35 Middle Neck Rd, 883-1430 www.umc.org **Sun** Worship & Church School 10 am Fellowship Hour (nursery care provided)

One Stop
Shopping for
Clean, Concise and Coordinated
Communications
Services

- Websites
- Graphic Design
- Advertising
- Event Planning
- Public Relations
- Logo Design
- Business Cards
- Stationery
- Sales Tools
- Brochures, Catalogs
- Publishing
- Newsletters
- Mailing Services

 Mainly
MARKETING
& Design

We Offer A Full Menu
of Marketing Tools

Please call us for more information:

516-883-0313

24 Main Street, Suite 201 • Port Washington, NY 11050

www.mainlymarketing.com